



a division of ADS Corporation

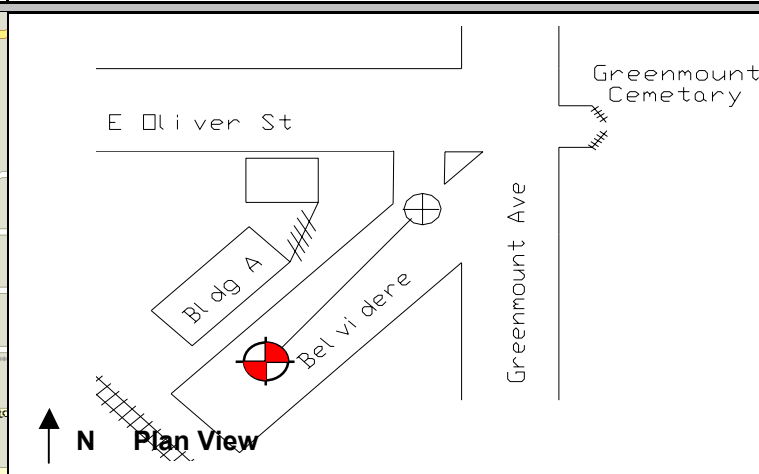
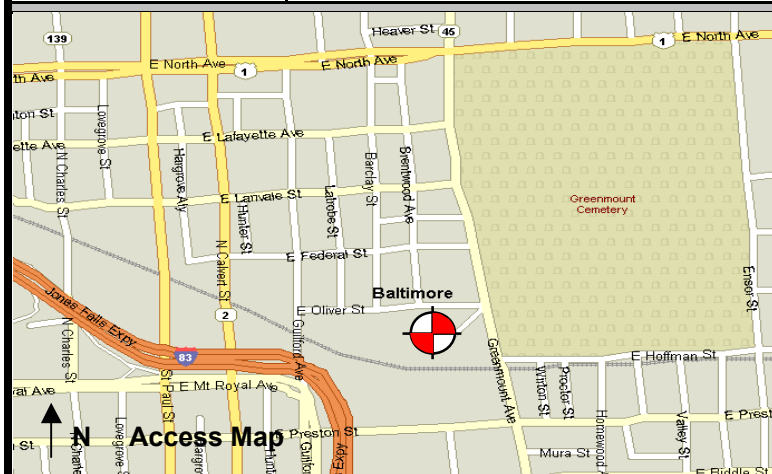
# Baltimore SSO

## Site Investigation Report

FM Initials: TM

Project Number: 07 Greemount Interceptor

Site Name:	07_JGA59I	Monitor Series:		Monitor S/N:		Manhole #:	JGA59	<b>Investigation Information:</b>
Address / Location:	1400 Belvidere St	Map Page #:	8	Map Grid #:	37 GG	Upstream Input: (L/S, P/S) N/A		
		Pipe Height:	20.5"	Pipe Width:	20.5"	Upstream Manhole: JGA58		
		IP Address:		Downstream Manhole: JGA60				
Access:	Drive (Residential)	GPS Coords:	N DD.dddd 39 18.376		W DD.dddd 76 36.576		Depth of Flow: 2.25"	
		Description of Site Hydraulics:						
Date/Time of Investigation:	7/25/08 10:30							



No abnormal conditions were observed.

### Manhole Information:

Manhole Depth: 12'4"

Manhole Material / Condition:

Brick / Good

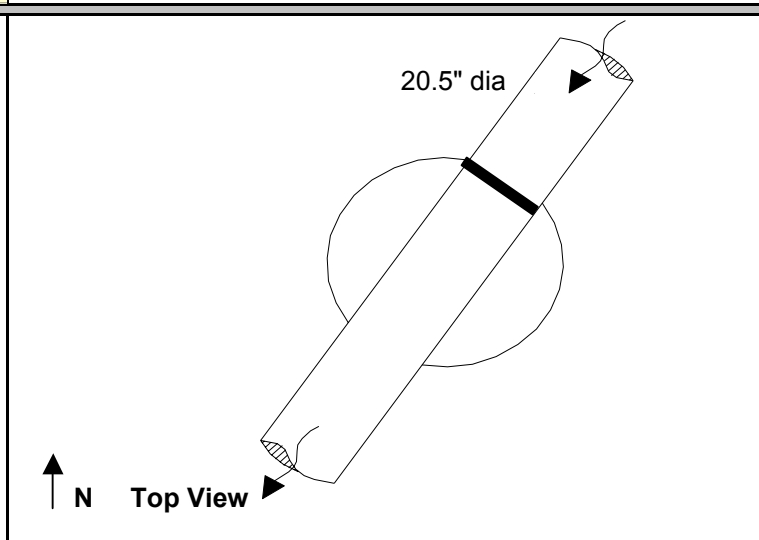
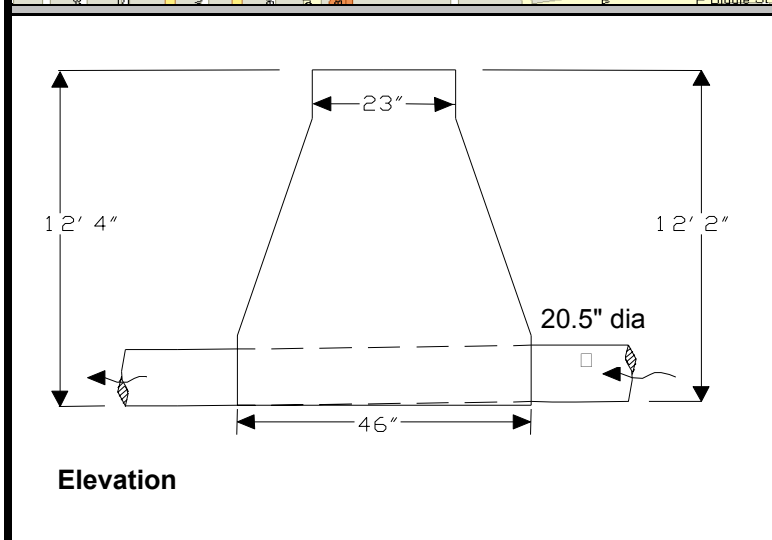
Active Drop Connections?

No

System Character:

- ☒ Residential
- ☐ Commercial
- ☐ Industrial

Notes:



### Legend:

Cast Iron Flap Valve

Sensor Location

N.T.S.- Not to scale

The monitoring period ended as of November 30, 2009.